

Specification

External Features

High performance energy/efficient
Composite doors
Energy efficient
External Light
Garage Power & Light (plot specific)
External Tap
Front and Rear Turf
Fencing

Heating

Energy efficient A rated gas boiler
Pressurised Water Cylinder (plot specific)
Dual zone heating system

Internal Features

Full alarm system
Hardwood veneered doors
Electronic smoke detectors

Bathrooms

Contemporary sanitaryware
Designer chrome taps
Porcelanosa Tiles
Chrome towel rails
Tiled floors
Tiled bath panels

Kitchens

Choice of contemporary kitchens
Choice of worktops and upstands
Zanussi Gas Hob
Zanussi Cooker Hood
Zanussi Electric Double Oven
Zanussi Fridge Freezer
Stainless Steel Monobloc tap

Riva Homes



THE WESTBURY

Riva Homes

Number of Bedrooms: 5 **Number of Bathrooms:** 2
Type: Townhouse

Designers comments

The Westbury is a very large 5 bedroom townhouse. The ground floor has an amazing kitchen and utility with aluminium bi-fold doors that open out to the garden. The separate large lounge is well connected to the house. The first floor has 3 good sized bedrooms and a lovely house bathroom. The second floor has an amazing dramatic open plan master bedroom with designer ensuite including huge shower and freestanding bath, there is also a flexible room for bedroom 5, a house study or even a walk in dressing room to suit your needs .



— THE OLD —
FIRE STATION

Sales enquiries 0113 818 7840 or email info@rivahomes.co.uk

WI House, Unit C, Nepshaw Lane South, Leeds, LS27 7JQ

rivahomes.co.uk

@rivahomes

Sales enquiries 0113 818 7840 or email info@rivahomes.co.uk

WI House, Unit C, Nepshaw Lane South, Leeds, LS27 7JQ

rivahomes.co.uk

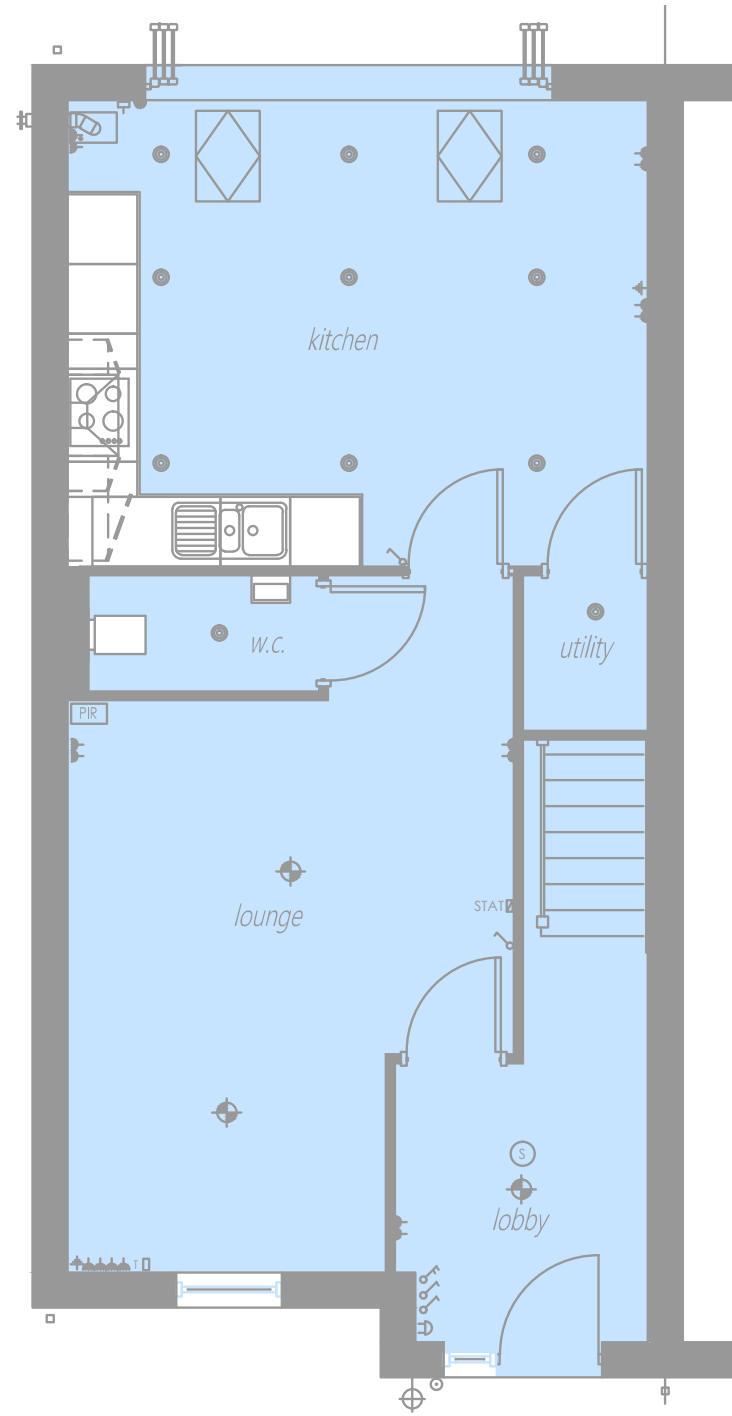
@rivahomes

Sales enquiries 0113 818 7840 or email info@rivahomes.co.uk

WI House, Unit C, Nepshaw Lane South, Leeds, LS27 7JQ

rivahomes.co.uk

@rivahomes



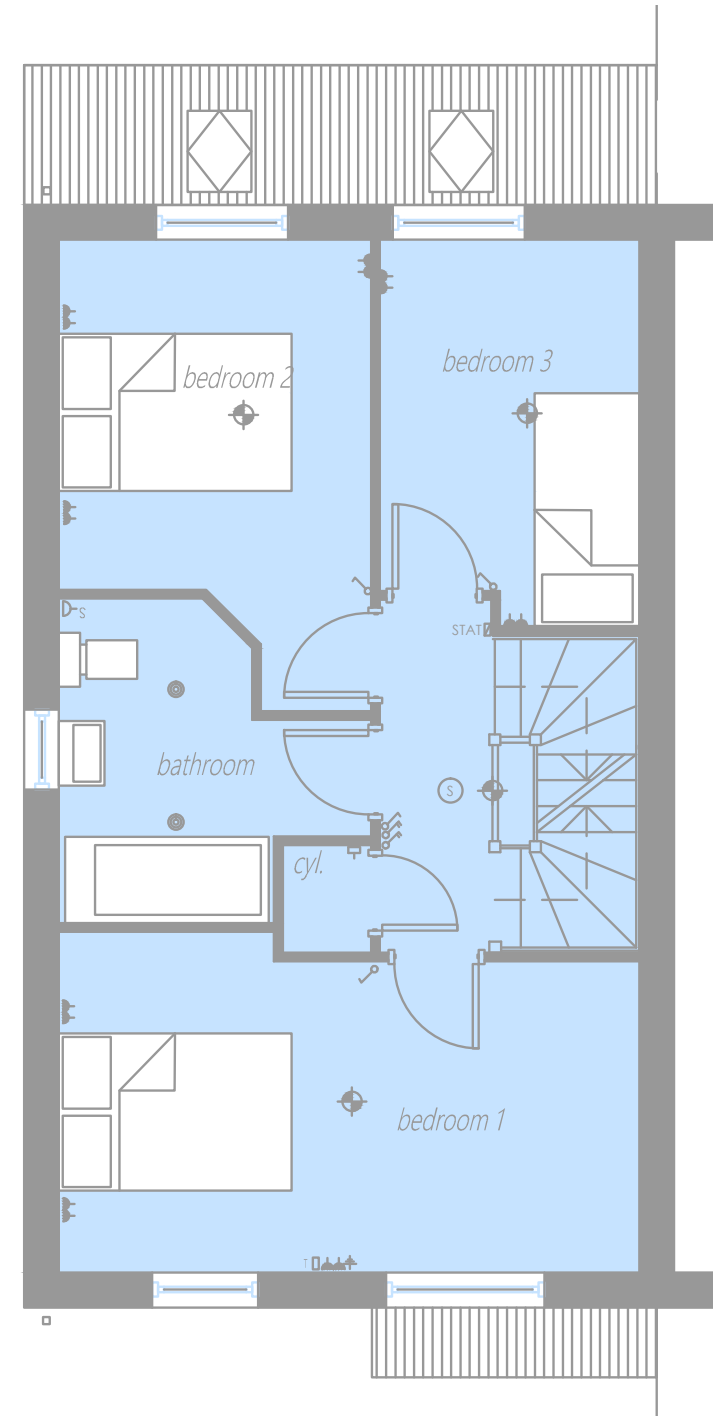
Ground Floor

lounge	4920 x 3940	16'1" x 12'9"
kitchen	2580 x 4850	12'3" x 15'9"
lobby	1920 x 2330	6'3" x 7'6"

- Phone Point
- ⊕ TV Aerial
- ⌚ Double Power Socket (Low Level)
- ⌚ Double Power Socket (High Level)
- ⊕ Pendant Ceiling Light Fitting
- Ceiling Spot Light
- ⊕ External Lantern Light Fitting
- D-S Shaver Socket

Sales enquiries 0113 818 7840 or email info@rivahomes.co.uk
 WI House, Unit C, Nepshaw Lane South, Leeds, LS27 7JQ

rivahomes.co.uk
 Instagram @rivahomes



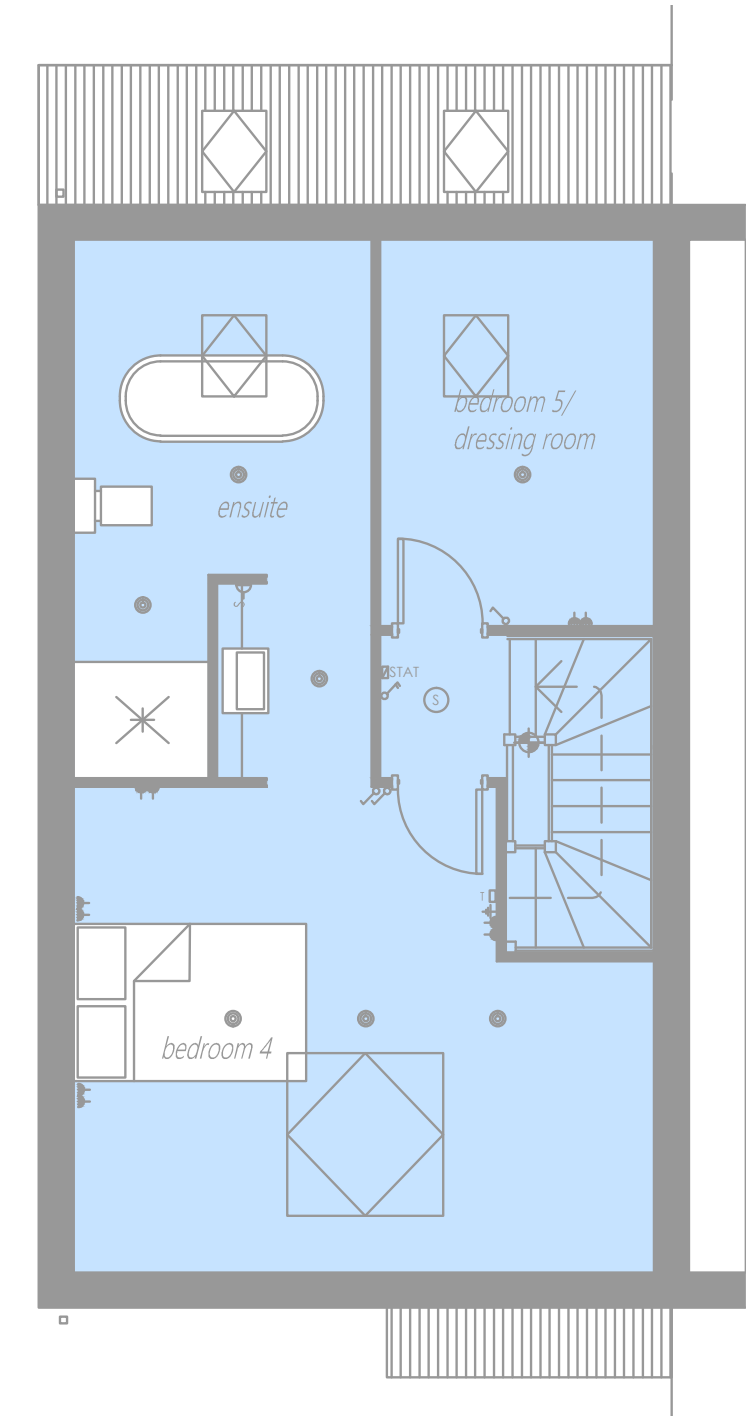
First Floor

bedroom 1	2850 x 4920	9'3" x 16'1"
bedroom 2	2600 x 4000	8'5" x 13'1"
bedroom 3	2180 x 3250	7'1" x 10'6"
bathroom	2600 x 2740	8'5" x 8'9"

The floor plans depict a typical layout for this home design. For exact details, designs, and dimensions including finishes please speak to our sales advisors. Measurements allow for a + or - 50mm tolerance. No materials whatsoever are to be ordered from this brochure. Refer to our standard terms and conditions which can be found at rivahomes.co.uk

Sales enquiries 0113 818 7840 or email info@rivahomes.co.uk
 WI House, Unit C, Nepshaw Lane South, Leeds, LS27 7JQ

rivahomes.co.uk
 Instagram @rivahomes



Second Floor

Bedroom 4	4110 x 4920	13'4" x 16'1"
Ensuite	2500 x 4550	8'2" x 14'9"
Bedroom 5	2300 x 3250	7'5" x 10'6"

- Phone Point
- ⊕ TV Aerial
- ⌚ Double Power Socket (Low Level)
- ⌚ Double Power Socket (High Level)
- ⊕ Pendant Ceiling Light Fitting
- Ceiling Spot Light
- ⊕ External Lantern Light Fitting
- D-S Shaver Socket

Sales enquiries 0113 818 7840 or email info@rivahomes.co.uk
 WI House, Unit C, Nepshaw Lane South, Leeds, LS27 7JQ

rivahomes.co.uk
 Instagram @rivahomes